



DEA No. RA0571996
FL License # CMTL-0003
CLIA No. 10D1094068

Certificate of Analysis

Compliance Test

PUR ISOLABS LLC
46 FM 3351 N
BERGHEIM, TEXAS 78004

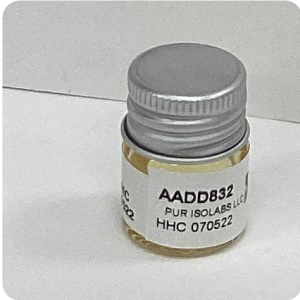
Batch # HHC 070522
Batch Date: 2022-07-22
Extracted From: Hemp

Test Reg State: Florida

Order # PUR220722-020001
Order Date: 2022-07-22
Sample # AADD832

Sampling Date: 2022-07-25
Lab Batch Date: 2022-07-25
Completion Date: 2022-08-01

Initial Gross Weight: 10.685 g



Product Image

Potency
Tested

HHC
Tested

Potency 21 (LCUV)

Specimen Weight: 58.130 mg

Tested

SOP13.002 (LCUV)

Analyte	Dilution (1:n)	LOD (%)	LOQ (%)	Result (mg/g)	(%)
CBDA	10.000	1.00E-5	0.0015	2.4150	0.2415
Delta-8 THC	10.000	2.60E-5	0.0015	2.0540	0.2054
Delta-8 THCV	10.000	4.00E-5	0.0015	0.8040	0.0804
CBN	10.000	1.40E-5	0.0015	0.3780	0.0378
THCA	10.000	3.20E-5	0.0015	<LOQ	<LOQ
THCVA	10.000	4.70E-5	0.0015	<LOQ	<LOQ
THCV	10.000	7.00E-6	0.0015	<LOQ	<LOQ
CBC	100.000	1.80E-5	0.0015	<LOQ	<LOQ
Exo-THC	10.000	2.30E-4	0.0015	<LOQ	<LOQ
Delta-9 THC-O Acetate	10.000	7.70E-5	0.0003	<LOQ	<LOQ
CBCA	10.000	1.07E-4	0.0015	<LOQ	<LOQ
Delta-8 THC-O Acetate	10.000	2.70E-5	0.0003	<LOQ	<LOQ
CBT	10.000	2.00E-4	0.0015	<LOQ	<LOQ
CBNA	10.000	9.50E-5	0.0015	<LOQ	<LOQ
CBL	10.000	3.50E-5	0.0015	<LOQ	<LOQ
CBGA	10.000	8.00E-5	0.0015	<LOQ	<LOQ
CBG	10.000	2.48E-4	0.0015	<LOQ	<LOQ
CBDVA	10.000	1.40E-5	0.0015	<LOQ	<LOQ
CBDV	10.000	6.50E-5	0.0015	<LOQ	<LOQ
CBD	10.000	5.40E-5	0.0015	<LOQ	<LOQ
Delta-9 THC	10.000	1.30E-5	0.0015	<LOQ	<LOQ

Potency Summary

Total HHC 99.42490%	-	Total THC None Detected
Total CBD 0.212%	-	Total CBG None Detected
Total CBN 0.038%		Other Cannabinoids 0.286%
Total Cannabinoids 99.960%		

Xueli Gao Lab Toxicologist
Ph.D., DABT

Aixia Sun Lab Director/Principal Scientist
D.H.Sc., M.Sc., B.Sc., MT (AAB)



Definitions and Abbreviations used in this report: Total CBD = CBD + (CBD-A * 0.877), *Total CBDV = CBDV + (CBDVA * 0.87), Total THC = THCA-A * 0.877 + Delta 9 THC, Total THCV = THCV + (THCVA * 0.87), CBG Total = (CBGA * 0.877) + CBG, CBN Total = (CBNA * 0.877) + CBN, Total CBC = CBC + (CBCA * 0.877), Total THC-O-Acetate = Delta 8 THC-O-Acetate + Delta 9 THC-O-Acetate, Other Cannabinoids Total = Total Cannabinoids - All the listed cannabinoids on the summary section, Total Detected Cannabinoids = Delta6a10a-THC + Delta8-THC + Total CBN + CBT + Delta8-THCV + Total CBG + Total CBD + Total THCV + CBL + Total THC + Total CBC + Total CBDV + Delta10-THC + Total THC-O-Acetate, + HHC Analyte Details above show the Dry Weight Concentrations unless specified as 12% moisture concentration. (mg/ml) = Milligrams per Milliliter, LOQ = Limit of Quantitation, LOD = Limit of Detection, Dilution = Dilution Factor (ppb) = Parts per Billion, (%) = Percent, (cfu/g) = Colony Forming Unit per Gram (cfu/g) = Colony Forming Unit per Gram, , LOD = Limit of Detection, (µg/g) = Microgram per Gram (ppm) = Parts per Million, (ppm) = (µg/g), (aw) = aw (area ratio) = Area Ratio, (mg/Kg) = Milligram per Kilogram, *Measurement of Uncertainty = +/- 10%

This report shall not be reproduced, without written approval, from ACS Laboratory. The results of this report relate only to the material or product analyzed. Test results are confidential unless explicitly waived otherwise. Accredited by a third-party accrediting body as a competent testing laboratory pursuant to ISO/IEC 17025 of the International Organization for Standardization.



DEA No. RA0571996
FL License # CMTL-0003
CLIA No. 10D1094068

Certificate of Analysis

Compliance Test

PUR ISOLABS LLC
46 FM 3351 N
BERGHEIM, TEXAS 78004

Batch # HHC 070522
Batch Date: 2022-07-22
Extracted From: Hemp

Test Reg State: Florida

Order # PUR220722-020001
Order Date: 2022-07-22
Sample # AADD832

Sampling Date: 2022-07-25
Lab Batch Date: 2022-07-25
Completion Date: 2022-08-01

Initial Gross Weight: 10.685 g



HHC

Specimen Weight: 58.130 mg

Tested

SOP13.050 (LCMS)

Dilution Factor: 5000.000

Analyte	LOD (%)	LOQ (%)	Result (mg/g)	(%)	Analyte	LOD (%)	LOQ (%)	Result (mg/g)	(%)
(9R)-HHC	3.1100E-7	7.5E-5	956.0659	95.60659	(±)-9R-hydroxy-HHC	4.5800E-7	7.5E-5	<LOQ	
(9S)-HHC	8.7400E-7	7.5E-5	38.1831	3.81831	Total HHC		7.5E-5	994.2490	99.4249

Xueli Gao
Xueli Gao Lab Toxicologist
Ph.D., DABT

Aixia Sun
Aixia Sun Lab Director/Principal Scientist
D.H.Sc., M.Sc., B.Sc., MT (AAB)



Definitions and Abbreviations used in this report: Total CBD = CBD + (CBD-A * 0.877), *Total CBDV = CBDV + (CBDVA * 0.87), Total THC = THCA-A * 0.877 + Delta 9 THC, Total THCV = THCV + (THCVA * 0.87), CBG Total = (CBGA * 0.877) + CBG, CBN Total = (CBNA * 0.877) + CBN, Total CBC = CBC + (CBCA * 0.877), Total THC-O-Acetate = Delta 8 THC-O-Acetate + Delta 9 THC-O-Acetate, Other Cannabinoids Total = Total Cannabinoids - All the listed cannabinoids on the summary section, Total Detected Cannabinoids = Delta6a10a-THC + Delta8-THC + Total CBN + CBT + Delta8-THCV + Total CBG + Total CBD + Total THCV + Total THC + Total CBC + Total CBDV + Delta10-THC + Total THC-O-Acetate, + HHC Analyte Details above show the Dry Weight Concentrations unless specified as 12% moisture concentration. (mg/ml) = Milligrams per Milliliter, LOQ = Limit of Quantitation, LOD = Limit of Detection, Dilution = Dilution Factor (ppb) = Parts per Billion, (%) = Percent, (cfu/g) = Colony Forming Unit per Gram (cfu/g) = Colony Forming Unit per Gram, , LOD = Limit of Detection, (µg/g) = Microgram per Gram (ppm) = Parts per Million, (ppm) = (µg/g), (aw) = aw (area ratio) = Area Ratio, (mg/Kg) = Milligram per Kilogram, *Measurement of Uncertainty = +/- 10%

This report shall not be reproduced, without written approval, from ACS Laboratory. The results of this report relate only to the material or product analyzed. Test results are confidential unless explicitly waived otherwise. Accredited by a third-party accrediting body as a competent testing laboratory pursuant to ISO/IEC 17025 of the International Organization for Standardization.